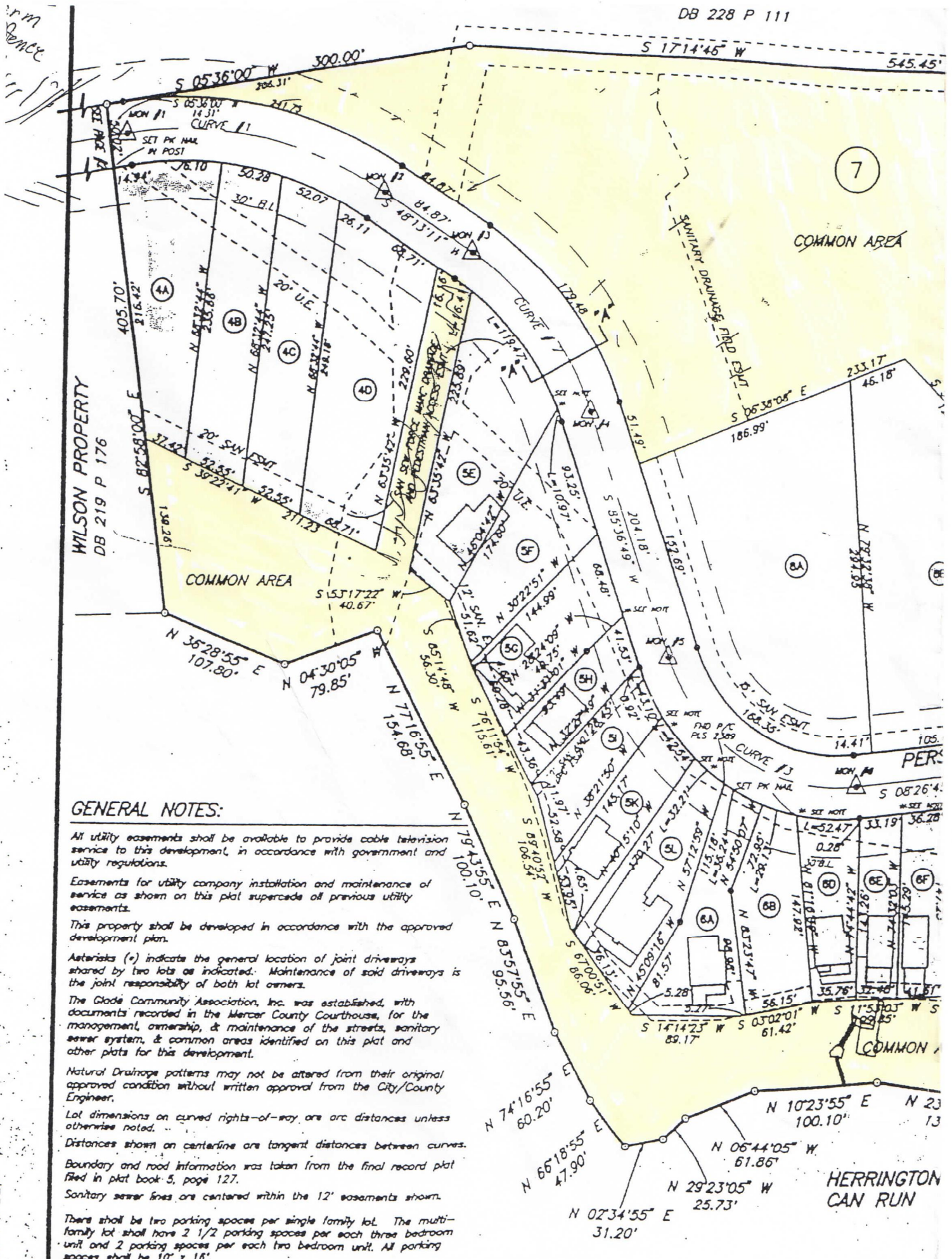


PLAT MAP



GENERAL NOTES:

All utility easements shall be available to provide cable television service to this development, in accordance with government and utility regulations.

Easements for utility company installation and maintenance of service as shown on this plat supersede all previous utility easements.

This property shall be developed in accordance with the approved development plan.

Asterisks (*) indicate the general location of joint driveways shared by two lots as indicated. Maintenance of said driveways is the joint responsibility of both lot owners.

The Glade Community Association, Inc. was established, with documents recorded in the Mercer County Courthouse, for the management, ownership, & maintenance of the streets, sanitary sewer system, & common areas identified on this plat and other plats for this development.

Natural Drainage patterns may not be altered from their original approved condition without written approval from the City/County Engineer.

Lot dimensions on curved rights-of-way are arc distances unless otherwise noted.

Distances shown on centerline are tangent distances between curves.

Boundary and road information was taken from the final record plat filed in plat book 5, page 127.

Sanitary sewer lines are centered within the 12' easements shown.

There shall be two parking spaces per single family lot. The multi-family lot shall have 2 1/2 parking spaces per each three bedroom unit and 2 parking spaces per each two bedroom unit. All parking spaces shall be 10' x 16'.

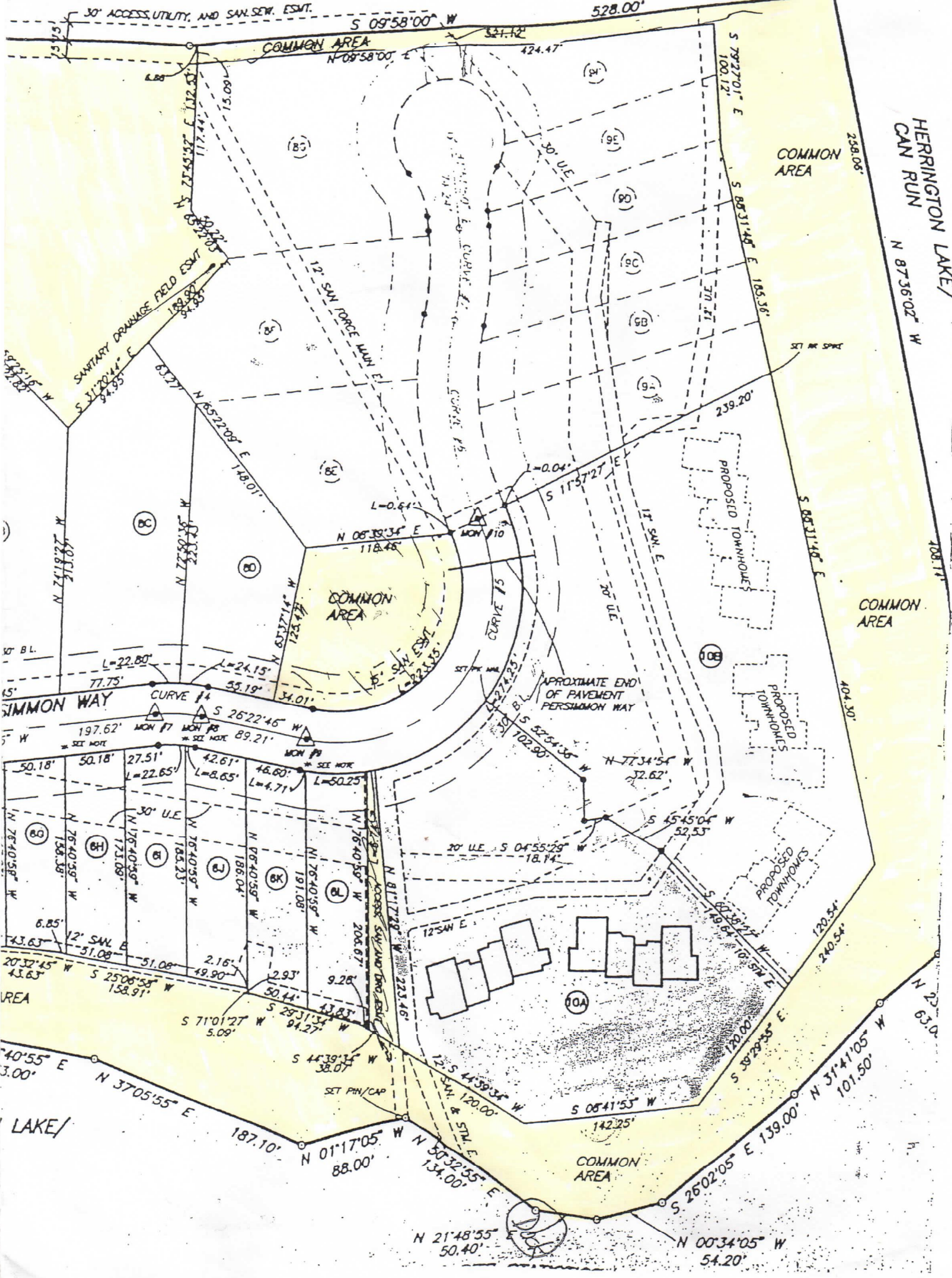
No residential units shall be constructed in the common areas or easements.

The extension of Paralemon Way shall meet County Road specifications and

CERTIFICATE OF APPROVAL FOR RECORDING

This plat has been approved for recording in

local governing body so requests.



HERRINGTON LAKE/
CAN RUN
N 87°36'02" W
108.17'

238.06'

COMMON AREA

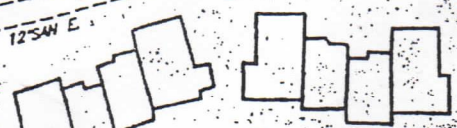
COMMON AREA

PROPOSED TOWNHOMES

PROPOSED TOWNHOMES

PROPOSED TOWNHOMES

APPROXIMATE END OF PAVEMENT PER SIMMONS WAY



10A

COMMON AREA

SIMMONS WAY

AREA

LAKE/

